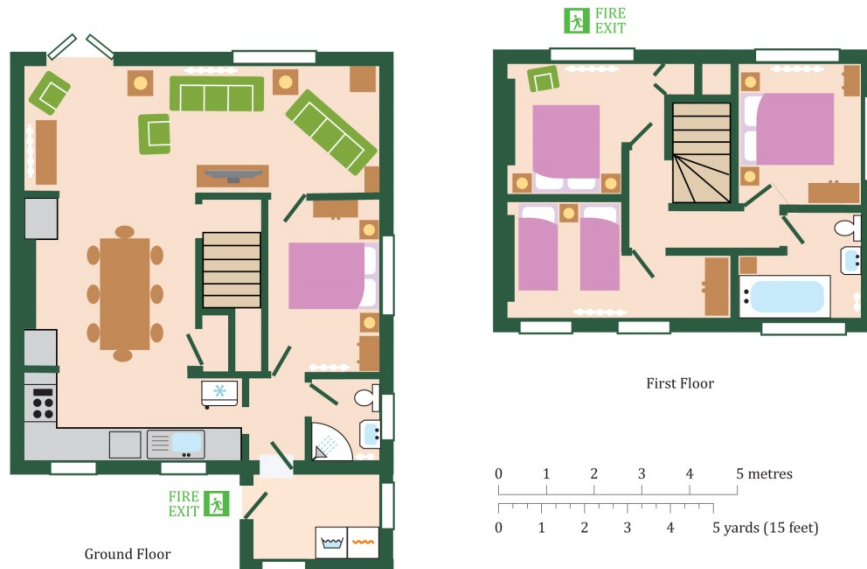




End Cottage – Sleeps 8 + 1 dog

- 1 double bedroom downstairs
- 2 double bedroom upstairs
- 1 twin bedroom which can be made into 4th double up stairs
- Family bathroom with shower over the bath and WC up stairs
- Shower room downstairs with WC
- Travel cot available
- Dogs Welcome



Your cottage includes:

- Linen (duvets), towels, tea towels, oven gloves.
- Electricity
- Central Heating from oil boiler system
- Washing machine
- Flat screen TV with Freeview & DVD
- I Pod docking station
- Selection of books & games
- Wireless Broadband Internet connection
- Fully equipped kitchen with cookware, serving dishes, cutlery, crockery & glassware
- Plastic bowls & cups for kids
- Salt & pepper
- Cafetiere, toaster, hand blender, mini whisk
- Gas cooker & oil fired Rayburn range cooker.

- Microwave, dishwasher, fridge/freezer
- Ice cube trays, plastic storage boxes.
- **Highchair, travel cot and bed guards, baby bath on request***
- Iron, ironing board, hairdryer, clothes line, pegs
- Torch, matches, tea light candles.
- BBQ, garden furniture BBQ, garden furniture
- Private terrace with direct access to shared garden & play area
- Doggy welcome basket
- Loan of our washable (not chewable) dog bed
- Doggy rocks for water bowls to keep our grass in decent condition.

Laundry: 24 hour laundry access, tumble driers £1.00 for half an hour drying time.

Water onsite at Cranmer

Water is supplied from our deep borehole. We are in a hard water area. Drinking water available from the kitchen cold water taps which is filtered at source and tested according to the UK drinking water quality regulations. Water to the shower and washing machine is softened with an ion exchange water softening system.

- Babies under 6 month should only drink bottled water.
- Formula should also be made with bottled water

Please not if you are bringing a dog to stay with you at Cranmer. Dogs are not permitted on the Cranmer main site only at End cottage.

Eco Friendly Housekeeping starter box is located under your kitchen sink:

- Delphis multi-purpose cleaner
- Delphis sanitiser spray
- Delphis Washing up liquid
- Delphis washroom cleaner
- Dishwasher tabs
- Laundry tablets
- Toilet roll per bathroom
- 2 black sacks

You may require further supplies for the duration of your stay.

Extras and special requirements

Please email us at bookings@norfolk-luxury-cottages.co.uk if you require any additional extras or to make any special arrangements at least two weeks prior to your stay.

Please request if you have not already:

- Highchair, travel cot, bed guards, baby bath, blackout blinds
- Bikes can be safely stowed request lockable bike shed key

- Key Safe: For arrivals after 6.00pm your front door key is available from the safe adjacent to the entrance of your cottage. You must contact us to advise a late arrival and we will supply the box code.

Please bring with you:

- Towels for the swimming pool
- Infants must wear a Splashabout neoprene Happy Nappy you can purchase these at www.splashabout.com
- Cot mattress and cot linen we do not provide these.

For your four legged guests:

- Cage if the family are going to be out, or if you are too young to be left alone without getting up to mischief! (puppies).
- Your own dogbed – so that you feel right at home.
- Compostable poop bags for use out an about in Norfolk.
<http://www.biobags.co.uk/products/dog.htm>
- A dog brush for use outside after muddy walks.
- Extendable lead for farm & nature walks. <http://www.ramblers.org.uk/advice/safety/dog-walkers.aspx>

Supermarket deliveries

When ordering your supermarket delivery from Waitrose, Sainsbury's or Tesco. **Please supply the COTTAGE NAME** and arrange for your delivery to arrive after you have, as we do not have staff to stow or check the order. Thank you.

End Cottage, 3 Home Farm Cottages NR21 9HY. The cottage is the end of terrace furthest from the road.