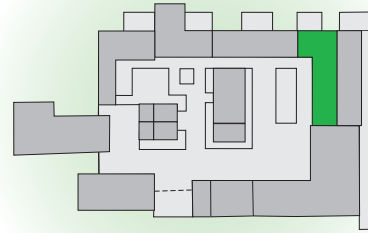


# SWALLOW

Most spacious cottage for the larger family group or those wanting something extra



## SLEEPS 6

Communicating door with WOODPECKER [for combined occupation]

KITCHEN Rayburn and gas cookers

DINING Large table and chairs for eight

SITTING Very spacious area with two sofas, one armchair

BEDROOM 1 Super king-size bed or 2 x 3ft singles + space for travel cot, wardrobe and drawers, hairdryer

BEDROOM 2 4ft double bed, wardrobe and drawers

BEDROOM 3 2 x 2ft 6in narrow single beds

BATHROOM Bath, WC, washbasin, walk-in shower

## STANDARD COTTAGE FEATURES

Single-storey ground floor cottage

### LIVING SPACE

Spacious open-plan kitchen/dining/sitting areas

### KITCHEN

Gas cooker, fridge/freezer, microwave, dishwasher, washing machine, ample storage cupboards, extensive range of cooking utensils, crockery and cutlery

### SITTING

Sofa, two armchairs, coffee table, TV, video, DVD, radio, CD player and small selection of books

Patio doors access terrace

### TERRACE

Private paved area with barbecue and garden furniture

### GENERAL

Gas central heating throughout

Electricity and heating included in rental

Linen and towels [except for swimming pool] provided in rental

Boot lobby

Cranmer spring water used

Non smoking throughout

No pets accommodated

Large groups by special arrangement only

