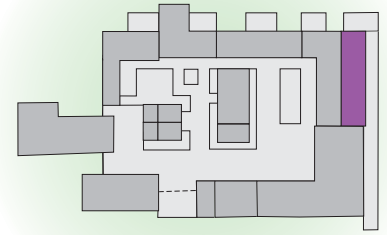


WOODPECKER

Designed for the larger family or group, this compact cottage offers ample choice



- SLEEPS 6 Communicating door with SWALLOW [for combined occupation]
- DINING Table and chairs for six
- SITTING Spacious area with two sofas, two armchairs
- BEDROOM 1 King-size bed, wardrobe and drawers, hairdryer, en suite shower, hand basin, wc
- BEDROOM 2 Twin beds, wardrobe and drawers
- BEDROOM 3 Two single bunk beds, drawers
- BATHROOM Bath, washbasin, wc
- TERRACE Fenced-in area

STANDARD COTTAGE FEATURES

Single-storey ground floor cottage

LIVING SPACE

Spacious open-plan kitchen/dining/sitting areas

KITCHEN

Gas cooker, fridge/freezer, microwave, dishwasher, ample storage cupboards, extensive range of cooking utensils, crockery and cutlery

SITTING

Sofa, two armchairs, coffee table, TV, video, DVD, radio, CD player and small selection of books

Patio doors access terrace

TERRACE

Private paved area with barbecue and garden furniture

GENERAL

Gas central heating throughout

Electricity and heating included in rental

Linen and towels [except for swimming pool] provided in rental

Cranmer spring water used

Non smoking throughout

No pets accommodated

Large groups by special arrangement only



0 1 2 3 4 5 metres

0 1 2 3 4 5 yards (15 feet)



Cranmer Country Cottages

HOME FARM ❖ CRANMER