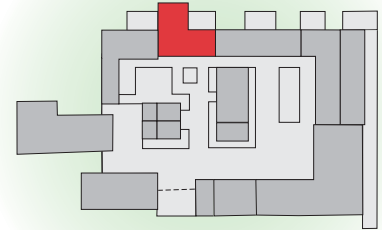


## WAGTAIL

Compact but spacious cottage, ideally suited to the small family, with wet room style bathroom, suitable for people with disabilities



SLEEPS 4 plus additional z-bed or cot

Communicating door with OWL [for combined occupation]

KITCHEN Good range of cooking utensils, crockery and cutlery

DINING Table and chairs for five. Woodburner (2006)

BEDROOM 1 King-size bed, wardrobe and drawers, hairdryer

BEDROOM 2 Two single beds + z-bed or cot on request, wardrobe and drawers

BATHROOM Washbasin, open shower, WC

### STANDARD COTTAGE FEATURES

Single-storey ground floor cottage

#### LIVING SPACE

Spacious open-plan kitchen/dining/sitting areas

#### KITCHEN

Gas cooker, fridge/freezer, microwave, dishwasher, ample storage cupboards, extensive range of cooking utensils, crockery and cutlery

#### SITTING

Sofa, two armchairs, coffee table, TV, video, DVD, radio, CD player and small selection of books

Patio doors access terrace

#### TERRACE

Private paved area with barbecue and garden furniture

#### GENERAL

Gas central heating throughout

Electricity and heating included in rental

Linen and towels [except for swimming pool] provided in rental

Cranmer spring water used

Non smoking throughout

No pets accommodated

Large groups by special arrangement only

0 1 2 3 4 5 metres

0 1 2 3 4 5 yards (15 feet)



Cranmer Country Cottages

HOME FARM ❖ CRANMER