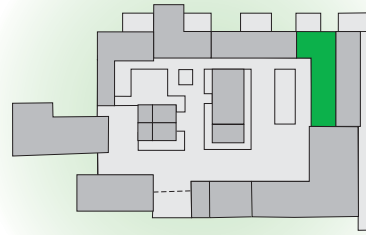


## SWALLOW

Most spacious cottage for the larger family group or those wanting something extra



### SLEEPS 5

Communicating door with WOODPECKER [for combined occupation]

**KITCHEN** Rayburn and gas cookers

**DINING** Large table and chairs for eight

**SITTING** Very spacious area with two sofas, one armchair

**BEDROOM 1** King-size bed + space for travel cot, wardrobe and drawers, hairdryer

**BEDROOM 2** Three single beds, wardrobe and drawers

**BATHROOM** Bath, WC, washbasin, walk-in shower

### STANDARD COTTAGE FEATURES

Single-storey ground floor cottage

#### LIVING SPACE

Spacious open-plan kitchen/dining/sitting areas

#### KITCHEN

Gas cooker, fridge/freezer, microwave, dishwasher, ample storage cupboards, extensive range of cooking utensils, crockery and cutlery

#### SITTING

Sofa, two armchairs, coffee table, TV, video, DVD, radio, CD player and small selection of books

Patio doors access terrace

#### TERRACE

Private paved area with barbecue and garden furniture

#### GENERAL

Gas central heating throughout

Electricity and heating included in rental

Linen and towels [except for swimming pool] provided in rental

Cranmer spring water used

Non smoking throughout

No pets accommodated

Large groups by special arrangement only

0 1 2 3 4 5 metres

0 1 2 3 4 5 yards (15 feet)



Cranmer Country Cottages

HOME FARM ❖ CRANMER