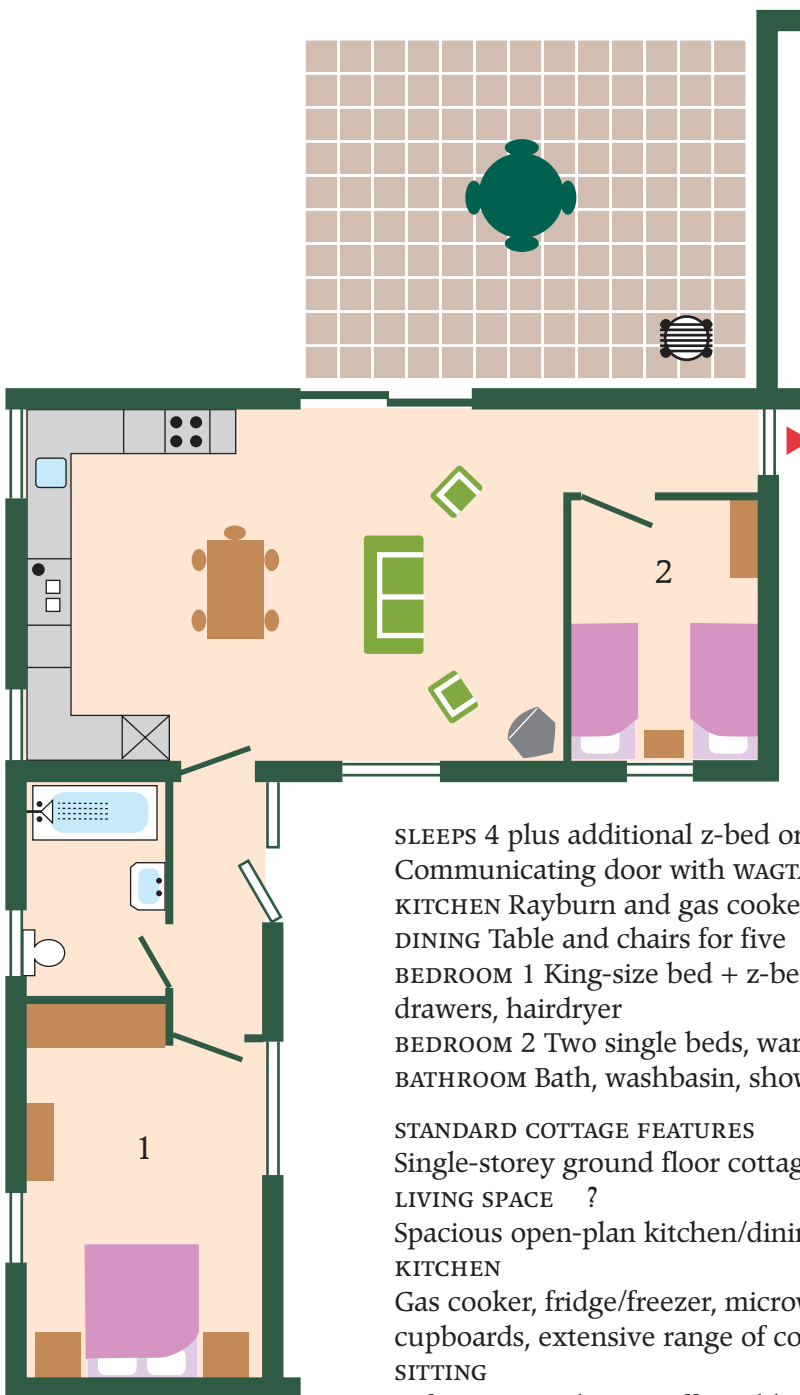
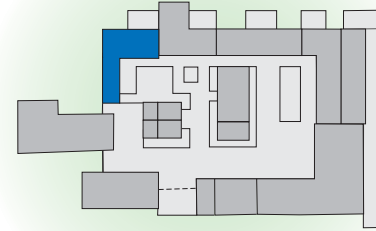


## OWL

Light and airy L-shaped cottage that overlooks the courtyard, ideal for two couples or small family



SLEEPS 4 plus additional z-bed or cot  
Communicating door with WAGTAIL [for combined occupation]  
KITCHEN Rayburn and gas cookers  
DINING Table and chairs for five  
BEDROOM 1 King-size bed + z-bed or cot on request, wardrobes and drawers, hairdryer  
BEDROOM 2 Two single beds, wardrobe and drawers  
BATHROOM Bath, washbasin, shower (over bath), wc

### STANDARD COTTAGE FEATURES

Single-storey ground floor cottage

LIVING SPACE ?

Spacious open-plan kitchen/dining/sitting areas

### KITCHEN

Gas cooker, fridge/freezer, microwave, dishwasher, ample storage cupboards, extensive range of cooking utensils, crockery and cutlery

### SITTING

Sofa, two armchairs, coffee table, TV, video, DVD, radio, CD player and small selection of books

Patio doors access terrace

### TERRACE

Private paved area with barbecue and garden furniture

### GENERAL

Gas central heating throughout

Electricity and heating included in rental

Linen and towels [except for swimming pool] provided in rental

Cranmer spring water used

Non smoking throughout

No pets accommodated

Large groups by special arrangement only

0 1 2 3 4 5 metres

0 1 2 3 4 5 yards (15 feet)



Cranmer Country Cottages

HOME FARM ❖ CRANMER